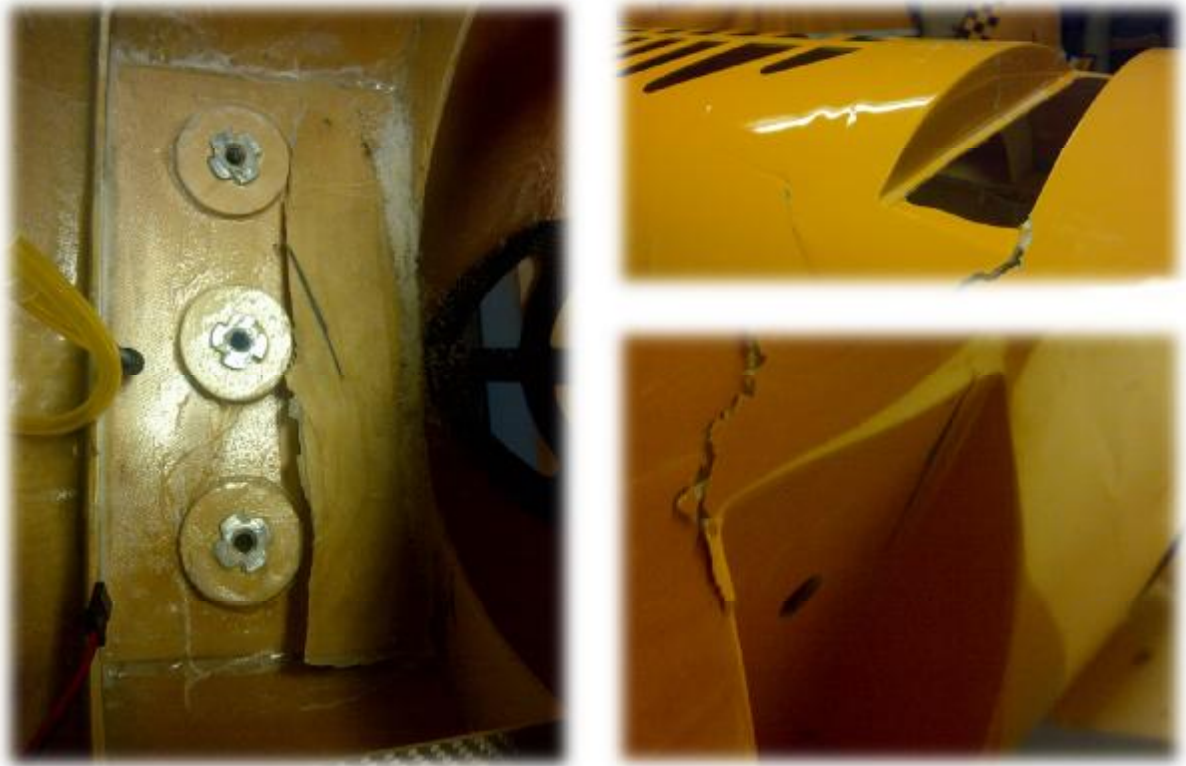


How i repaired my 33%Krill fuselage, landinggear area.



Broken plywood and also some broken sandwich laminate in landing gear area.

Broken area removed with a 2mm endmill.



Old Plywood removed and some of delaminated inner laminate.

Two layers of 165g/m² glasfibre added up to fuselage plywood longeron. (Red lines..)

Rectangular hole milled from outside to make removal easier.



Removed plywood and laminates from the Fuselage.



New 6mm plywood created with 165g/m² Carbonfibre on both sides. Plywood plate glued with good

Connection to fuselage with epoxy and microfiber mix. I always use 24hr epoxy of best quality of course. Some epoxy's are really bad for gluing....

Add glasfibre to fuselage laminate and rounded up to plywood section, to spread the force from landing gear.

Broken Sandwich is repaired by remove inner laminate and also the sandwich material carefully. If outerskin is broken I also remove this with a thin endmill.

In this case a thin tape could be placed on outer skin..

I fill the missing sandwich panel with epoxy and microfiber, make

Sure fill well to remaining sandwich panel. I put a layer och 163g/m²

Glasfibre in insidelaminate.

